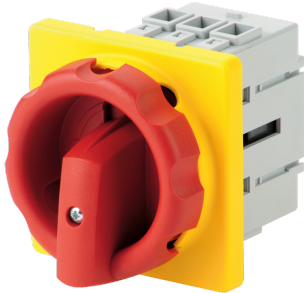


21113203

Manually operated transfer switch COMO 3P 30A enclosed door mounting



Strong points

- Easy assembly
- Compact
- Safety

General characteristics

- 2 stable positions (I, 0).
- Double break by phase.
- Clear break indication.
- Contact point technology.
- Padlocking in 0 position.
- IP20 devices and accessories.

Compliance with standards

- IEC 60947-3
- UL 60947-4-1
- GB/T 14048.3

Access to resources (ex: manuals)

<https://www.socomec.co.in/en-in/reference/21113203>

COMO devices make and break under all types of load conditions and provide safe isolation for any low voltage circuit, especially for machine control circuits.

| | |
|---|--|
| Classification | |
| UNSPSC | 39122233 |
| ETIM Class | EC000216 |
| IGCC | 5290 |
| Commerce | |
| Effective date | 2016-02-29 |
| Country of origin | DE |
| Length of the product unit | 0.067 |
| Width of the product unit | 0.067 |
| Depth of the product unit | 0.088 |
| Weight | 0.13 |
| ETIM - Electrical characteristics | |
| Max. rated operation voltage Ue AC [V] | 690 |
| Rated operating voltage [V] | 400..690 |
| Rated permanent current Iu [A] | 32 |
| Rated permanent current at AC-23, 400 V [A] | 22 |
| Rated permanent current at AC-21, 400 V [A] | 32 |
| Rated operation power at AC-3, 400 V [kW] | 32 |
| Rated short-time withstand current Icw [kA] | 0.64 |
| Rated operation power at AC-23, 400 V [kW] | 11.5 |
| Switching power at 400 V [kW] | 11.5 |
| Conditioned rated short-circuit current Iq [kA] | 8 |
| Number of poles | 3 |
| ETIM - Mechanical characteristics | |
| Suitable for floor mounting | No |
| Suitable for front mounting 4-hole | No |
| Suitable for front mounting centre | Yes |
| Suitable for distribution board installation | No |
| Suitable for intermediate mounting | Yes |
| Colour control element | Other |
| Degree of protection (IP), front side | IP20 |
| ETIM - Technical features | |
| Version as main switch | No |
| Version as maintenance-/service switch | Yes |
| Version as safety switch | Yes |
| Version as emergency stop installation | Yes |
| Version as reversing switch | No |
| Number of switches | 1 |
| Motor drive optional | No |
| Motor drive integrated | No |
| Voltage release optional | No |
| Device construction | Built-in device fixed built-in technique |
| Type of control element | Other |
| Interlockable | Yes |
| Type of electrical connection of main circuit | Screw connection |

Logistics

| | |
|----------------------------|---------------|
| GTIN/EAN | 3596032965563 |
| Customs number | 8536508090 |
| Price unit | PC |
| Weight of the packing unit | 0.13 |
| Length of the packing unit | 0.036 |
| Width of the packing unit | 0.066 |
| Depth of the packing unit | 0.08 |

Norms

| | |
|-------------------------|-----|
| Conformity to standards | IEC |
|-------------------------|-----|

Technical Characteristics

| | |
|------------------|--------------------------|
| Control operator | K1-Direct, door mounting |
| Number of poles | 3 |
| Rated voltage | 400..690 VAC |
| Rated current | 30 (UL) 32 (IEC) |
| Type | Door mounting |
| Frame size | COMO |