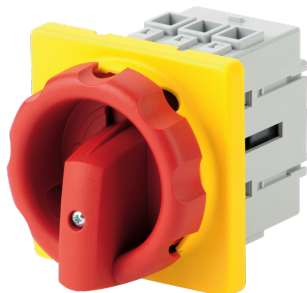


21113303G

Manually operated transfer switch COMO 3P 30A "Quick Fix



Strong points

- Easy assembly
- Compact
- Safety

General characteristics

- 2 stable positions (I, 0).
- Double break by phase.
- Clear break indication.
- Contact point technology.
- Padlocking in 0 position.
- IP20 devices and accessories.

Compliance with standards

- IEC 60947-3
- UL 60947-4-1
- GB/T 14048.3

Access to resources (ex: manuals)

<https://www.socomec.co.in/en-in/reference/21113303G>

COMO devices make and break under all types of load conditions and provide safe isolation for any low voltage circuit, especially for machine control circuits.

Classification	
UNSPSC	39122233
ETIM Class	EC000216
IGCC	5290
Commerce	
Effective date	2022-05-31
Country of origin	FR
Length of the product unit	0.067
Width of the product unit	0.067
Depth of the product unit	0.088
Weight	0.21
ETIM - Electrical characteristics	
Max. rated operation voltage Ue AC [V]	690
Rated operating voltage [V]	400..690
Rated permanent current Iu [A]	30
Rated short-time withstand current Icw [kA]	0.64
Rated operation power at AC-23, 400 V [kW]	11.5
Switching power at 400 V [kW]	11.5
Number of poles	3
ETIM - Mechanical characteristics	
Suitable for floor mounting	No
Suitable for front mounting 4-hole	No
Suitable for front mounting centre	Yes
Suitable for distribution board installation	No
Suitable for intermediate mounting	No
Colour control element	Other
Degree of protection (IP), front side	IP20
ETIM - Technical features	
Version as main switch	Yes
Version as maintenance-/service switch	Yes
Version as safety switch	Yes
Version as emergency stop installation	Yes
Version as reversing switch	No
Number of switches	1
Motor drive optional	No
Motor drive integrated	No
Voltage release optional	No
Device construction	Built-in device fixed built-in technique
Type of control element	Other
Interlockable	Yes
Type of electrical connection of main circuit	Screw connection
Logistics	
Customs number	8537109899
Price unit	PC
Weight of the packing unit	0.21

Length of the packing unit	0.13
Width of the packing unit	0.27
Depth of the packing unit	0.28
Norms	
Conformity to standards	IEC
Technical Characteristics	
Control operator	k1-Direct, door mounting, quick fix
Number of poles	3
Rated voltage	400..690 VAC
Rated current	30 (UL) 32 (IEC)
Type	Door mounting, quick fix
Frame size	COMO