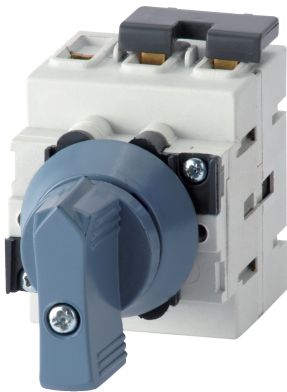


21PV3324

Load break switch photovoltaic app SIRCO MC PV 600VDC 2 P+, 1 P- 40A  
"Quick Fix



Access to resources (ex: manuals)

<https://www.socomec.co.in/en-in/reference/21PV3324>

----- System -----

Fill rate E-Order Common	100
Fill rate E-Order Selection	78

Classification

UNSPSC	39122233
ETIM Class	EC000216
IGCC	5290

Commerce

Effective date	2012-01-14
Obsolescence date	2021-06-01
Production ban date	2021-12-31
Country of origin	PL
Discount Policy	1CD20
Discount Policy Label	INTER PV IEC
Length of the product unit	0.055
Width of the product unit	0.0445
Depth of the product unit	0.051
Weight	0.183

ETIM - Electrical characteristics

Max. rated operation voltage Ue AC [V]	1000
Rated operating voltage [V]	600..600
Rated permanent current Iu [A]	40
Number of poles	3

**ETIM - Mechanical characteristics**

Suitable for floor mounting	No
Suitable for front mounting 4-hole	No
Suitable for front mounting centre	Yes
Suitable for distribution board installation	Yes
Suitable for intermediate mounting	Yes
Colour control element	Other
Degree of protection (IP), front side	IP20

**ETIM - Technical features**

Version as main switch	Yes
Version as maintenance-/service switch	Yes
Version as safety switch	Yes
Version as emergency stop installation	Yes
Version as reversing switch	No
Number of switches	1
Motor drive optional	No
Motor drive integrated	No
Voltage release optional	No
Device construction	Built-in device fixed built-in technique
Type of control element	Other
Interlockable	Yes
Type of electrical connection of main circuit	Screw connection

**Logistics**

GTIN/EAN	3596032794880
Customs number	8536508090
Price unit	PC
Weight of the packing unit	0.183
Length of the packing unit	0.08
Width of the packing unit	0.08
Depth of the packing unit	0.09

**Norms**

Conformity to standards	IEC UL
-------------------------	------------

**Technical Characteristics**

Control operator	Manual
Number of poles	3
Rated voltage	600
Rated current	40
Type	Frontal operation
Frame size	MC