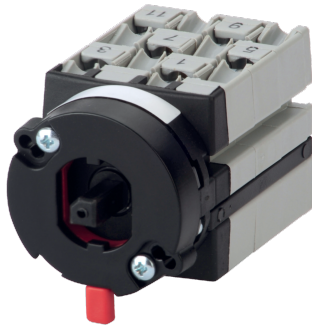


43204102

COMO CS switch body, I-II function, 4P, door mounting, 25A



Strong points

- Simple installation
- Quick mounting
- Effective in all circumstances

General characteristics

- Range from 25A to 100A.
- Available in 3P or 4P.
- Rear mounting or door mounting.
- Available as stand-alone switches or enclosed.

Compliance with standards

- IEC 60947-3
- UL 60947-4-1

Access to resources (ex: manuals)

<https://www.socomec.co.in/en-in/reference/43204102>

COMO CS are manually operated multi-pole transfer switches. They ensure switching, transfer of sources or transfer of two low voltage circuits on load as well as their safe disconnection.

Classification

| | |
|------------|----------|
| UNSPSC | 39122205 |
| ETIM Class | EC000216 |
| IGCC | 5177 |

Commerce

| | |
|----------------------------|------------|
| Effective date | 2018-09-18 |
| Country of origin | DE |
| Length of the product unit | 0.039 |
| Width of the product unit | 0.093 |
| Depth of the product unit | 0.04 |

ETIM - Electrical characteristics

| | |
|---|----------|
| Max. rated operation voltage Ue AC [V] | 690 |
| Rated operating voltage [V] | 400..690 |
| Rated permanent current Iu [A] | 25 |
| Rated permanent current at AC-23, 400 V [A] | 15 |
| Rated permanent current at AC-21, 400 V [A] | 25 |
| Rated operation power at AC-3, 400 V [kW] | 12 |
| Rated operation power at AC-23, 400 V [kW] | 7.5 |
| Switching power at 400 V [kW] | 7.5 |
| Conditioned rated short-circuit current Iq [kA] | 7 |
| Number of poles | 4 |

ETIM - Mechanical characteristics

| | |
|--|-------|
| Suitable for floor mounting | No |
| Suitable for front mounting 4-hole | Yes |
| Suitable for front mounting centre | Yes |
| Suitable for distribution board installation | No |
| Suitable for intermediate mounting | No |
| Colour control element | Black |
| Degree of protection (IP), front side | IP20 |

ETIM - Technical features

| | |
|---|--|
| Version as main switch | Yes |
| Version as maintenance-/service switch | Yes |
| Version as safety switch | Yes |
| Version as emergency stop installation | No |
| Version as reversing switch | Yes |
| Number of switches | 1 |
| Motor drive optional | No |
| Motor drive integrated | No |
| Voltage release optional | No |
| Device construction | Built-in device fixed built-in technique |
| Type of control element | Short thumb-grip |
| Interlockable | Yes |
| Type of electrical connection of main circuit | Cable clamp |

Logistics

| | |
|----------------------------------|-----------------------|
| GTIN/EAN | 3596033033346 |
| Customs number | 8536508090 |
| Price unit | PC |
| Weight of the packing unit | 0.147 |
| Length of the packing unit | 0.09 |
| Width of the packing unit | 0.07 |
| Depth of the packing unit | 0.08 |
| Norms | |
| Conformity to standards | IEC UL |
| Technical Characteristics | |
| Control operator | Direct / External : L |
| Number of poles | 4 |
| Rated current | 25 |
| Type | door mounting |
| Frame size | CSd |