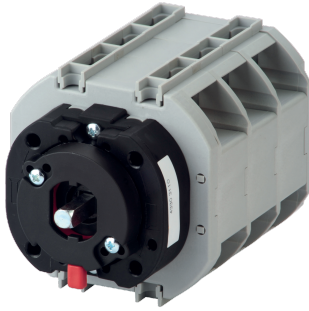


43304106

## COMO CS switch body, I-0-II function, 4P, door mounting, 63A



### Strong points

- Simple installation
- Quick mounting
- Effective in all circumstances

### General characteristics

- Range from 25A to 100A.
- Available in 3P or 4P.
- Rear mounting or door mounting.
- Available as stand-alone switches or enclosed.

### Compliance with standards

- IEC 60947-3
- UL 60947-4-1

### Access to resources (ex: manuals)

<https://www.socomec.co.in/en-in/reference/43304106>

They ensure switching, transfer of sources or transfer of two low voltage circuits on load as well as their safe disconnection.

### Classification

|            |          |
|------------|----------|
| UNSPSC     | 39122205 |
| ETIM Class | EC000216 |
| IGCC       | 5177     |

### Commerce

|                            |            |
|----------------------------|------------|
| Effective date             | 2018-09-18 |
| Country of origin          | DE         |
| Length of the product unit | 0.074      |
| Width of the product unit  | 0.134      |
| Depth of the product unit  | 0.071      |

### ETIM - Electrical characteristics

|   |          |
|---|----------|
| Max. rated operation voltage Ue AC [V]          | 690      |
| Rated operating voltage [V]                     | 400..690 |
| Rated permanent current Iu [A]                  | 63       |
| Rated permanent current at AC-23, 400 V [A]     | 63       |
| Rated permanent current at AC-21, 400 V [A]     | 63       |
| Rated operation power at AC-23, 400 V [kW]      | 37       |
| Switching power at 400 V [kW]                   | 37       |
| Conditioned rated short-circuit current Iq [kA] | 5        |
| Number of poles                                 | 4        |

### ETIM - Mechanical characteristics

|  |       |
|--|-------|
| Suitable for floor mounting                  | No    |
| Suitable for front mounting 4-hole           | Yes   |
| Suitable for front mounting centre           | Yes   |
| Suitable for distribution board installation | No    |
| Suitable for intermediate mounting           | No    |
| Colour control element                       | Black |
| Degree of protection (IP), front side        | IP20  |

### ETIM - Technical features

|   |  |
|---|--|
| Version as main switch                        | Yes                                      |
| Version as maintenance-/service switch        | Yes                                      |
| Version as safety switch                      | Yes                                      |
| Version as emergency stop installation        | No                                       |
| Version as reversing switch                   | Yes                                      |
| Number of switches                            | 1  |
| Motor drive optional                          | No                                       |
| Motor drive integrated                        | No                                       |
| Voltage release optional                      | No                                       |
| Device construction                           | Built-in device fixed built-in technique |
| Type of control element                       | Short thumb-grip                         |
| Interlockable                                 | Yes                                      |
| Type of electrical connection of main circuit | Cable clamp                              |

### Logistics

|                |               |
|----------------|---------------|
| GTIN/EAN       | 3596033033605 |
| Customs number | 8536508090    |

|                                  |                       |
|----------------------------------|-----------------------|
| Price unit                       | PC                    |
| Weight of the packing unit       | 0.588                 |
| Length of the packing unit       | 0.115                 |
| Width of the packing unit        | 0.1                   |
| Depth of the packing unit        | 0.165                 |
| <b>Norms</b>                     |                       |
| Conformity to standards          | IEC<br/>UL            |
| <b>Technical Characteristics</b> |                       |
| Control operator                 | Direct / External : L |
| Number of poles                  | 4                     |
| Rated current                    | 63                    |
| Type                             | door mounting         |
| Frame size                       | CSd                   |