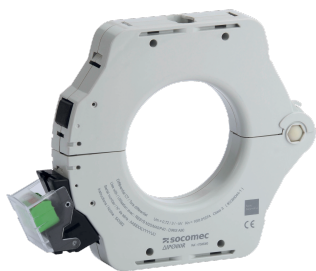


47506081

## Split-core toroid 80mm



### Strong points

- A complete range
- Optimum performance
- High sensitivity
- Clear alarm indication
- Plug & Play

### General characteristics

- A complete range.
- From 50 to 120 mm.
- Dedicated to DIRIS Digiware R-60.
- Suitable for earth leakage protection relays RESYS M40/P40.

### Compliance with standards

- IEC 61869-1

### Access to resources (ex: manuals)

<https://www.socomec.co.in/en-in/reference/47506081>

Residual core transformers, including the active conductors, establish the differential sum of the vector currents to detect leakage currents.

Closed ?IP-R series models, these core transformers are suitable for all wiring configurations in new and existing systems.

Mounted on a DIN rail, plate or straight on the cable, these residual CTs adapt to any setup constraints for easier and faster wiring.

You need core balance transformers to implement differential relay protective or signalling units.

### Classification

UNSPSC	39122309
ETIM Class	EC002048
IGCC	5343

### Commerce

Effective date	2014-10-30
Country of origin	FR

### ETIM - Electrical characteristics

Rated primary current [A]	10
Rated secondary current [A]	0.016
Rated secondary apparent power [VA]	0.05
Accuracy class	3
Overcurrent limiting factor	FS 5
Calibrated	No

### ETIM - Mechanical characteristics

With contact protection	No
Opening diameter [mm]	80
Snap mounting	Yes
With copper rail	No
Secondary connection	Plug-in connection

### ETIM - Technical features

Model	Other
Number of primary inputs	1

### Logistics

GTIN/EAN	3596032831639
Customs number	8504312190
Price unit	PC
Weight of the packing unit	0.97
Length of the packing unit	0.215
Width of the packing unit	0.17
Depth of the packing unit	0.04

### Norms

Conformity to standards	IEC
-------------------------	-----

### Technical Characteristics

Model	DELTA IP 80R
Opening	Circular split core
Size	80 mm