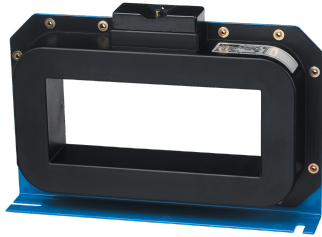


47951535

## Rectangular closed toroid WR 150x350 150x350mm A type



You need core balance transformers to install fault detection and locating units. These enclose the active conductors and highlight earth fault currents. Socomec core balance transformers meet measurement sensitivity needs and are suitable for ISOM Digiware locating systems. Closed (?IP, WR and TFR series) or split (?IP-R series), both types are suitable for all wiring configurations. The use of the ISOM T-15 adapter is required to connect the core balance transformers to ISOM Digiware F-60.

### Strong points

- A complete range
- Number of fixing options (?IP and ?IP-R)
- Patented centring solution (?IP and ?IP-R)
- Quick to install and safe to use (?IP-R)

### General characteristics

- Full range.
- Number of fixing options (?IP and ?IP-R).
- Patented centring solution (?IP and ?IP-R).
- Quick to install and safe to use (?IP-R).

### Compliance with standards

- IEC 61869-1

### Access to resources (ex: manuals)

### Classification

UNSPSC	39122309
ETIM Class	EC002048
IGCC	5343

### Commerce

Effective date	1995-04-12
Country of origin	ES

### ETIM - Electrical characteristics

Rated primary current [A]	10
Rated secondary current [A]	0.016
Rated secondary apparent power [VA]	0.02
Accuracy class	5
Overcurrent limiting factor	FS 5
Calibrated	No

### ETIM - Mechanical characteristics

With contact protection	No
Snap mounting	No
With copper rail	No
Secondary connection	Screw connection

### ETIM - Technical features

Model	Other
Number of primary inputs	1

### Logistics

GTIN/EAN	3596031227594
Customs number	8504312990
Price unit	PC
Weight of the packing unit	8.131
Length of the packing unit	0.475
Width of the packing unit	0.3
Depth of the packing unit	0.06

### Technical Characteristics

Model	WR 150X350
Opening	Rectangular closed
Size	150x350 mm

<https://www.socomec.co.in/en-in/reference/47951535>