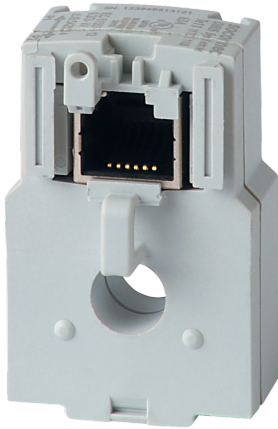


**48290500**

## Solid current sensor TE-18 18mm 5-20A



### Strong points

- Plug & Play
- Accuracy as per standard IEC 61557-12
- Installation

### General characteristics

- Range from 5 to 2000A.
- used with DIRIS Digiware, DIRIS A-40 and DIRIS B.

### Compliance with standards

- IEC 61557-12
- ISO 14025
- UL

### Access to resources (ex: manuals)

<https://www.socomec.co.in/en->

[in/reference/48290500](https://www.socomec.co.in/en-in/reference/48290500)

TE smart current sensors measure the load currents of an electrical system and send the data to meters and measurement hubs via an RJ12 plug-and-play output. Thanks to a wide measurement range, TE current sensors cover the full current range of 5 to 2000 A, with 7 references. TE solid current sensors can be connected to DIRIS Digiware, DIRIS A-40 and DIRIS B via a rapid RJ12 connection. Numerous accessories are available to aid the installation of sensors in any type of cabinet.

### Classification

UNSPSC	83101808
ETIM Class	EC002048
IGCC	6042

### Commerce

Effective date	2013-11-22
Country of origin	FR

### ETIM - Electrical characteristics

Rated primary current [A]	20
Rated secondary current [A]	0.1
Rated secondary apparent power [VA]	0.1
Accuracy class	0.2S
Overcurrent limiting factor	FS 10
Calibrated	Yes

### ETIM - Mechanical characteristics

With contact protection	Yes
Height opening [mm]	8.6..8.6
Width opening [mm]	8.6..8.6
Opening diameter [mm]	8.6
Snap mounting	Yes
With copper rail	Yes
Secondary connection	Plug-in connection

### ETIM - Technical features

Model	Through-feed current converter
Number of primary inputs	1

### Logistics

GTIN/EAN	3596032776466
Customs number	8504312990
Price unit	PC
Weight of the packing unit	0.03
Length of the packing unit	0.02
Width of the packing unit	0.11
Depth of the packing unit	0.13

### Norms

Conformity to standards	IEC UL
-------------------------	------------

### Technical Characteristics

Model	TE
Opening	Diam.8,6
Rated current	20
Secondary rated current	RJ12