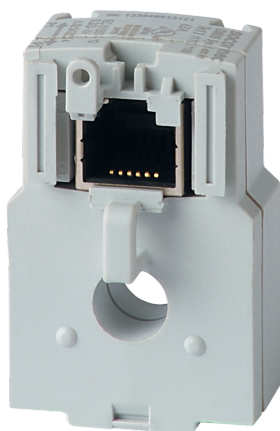


48290599

RJ12 adaptor for 1A and 5A secondary CTs, 10000 A max. for 5A CT



General characteristics

- Max primary current 2000 A / 1 A or 10 000 A / 5 A.

Access to resources (ex: manuals)

<https://www.socomec.co.in/en-in/reference/48290599>

With this adapter you can use a current transformer with a 1 A or 5 A output on DIRIS Digiware I, DIRIS B and DIRIS A-40.
For use with 5 A CTs (measurement up to 10 000 A) or a 1 A CTs (measurement up to 2000 A). The dimensions are the same as the TE-18.

Classification

UNSPSC	83101808
ETIM Class	EC002048
IGCC	6042

Commerce

Effective date	2013-11-22
Country of origin	FR

ETIM - Electrical characteristics

Rated primary current [A]	5
Accuracy class	0.2
Overcurrent limiting factor	FS 10
Calibrated	Yes

ETIM - Mechanical characteristics

With contact protection	Yes
Opening diameter [mm]	8.6
Snap mounting	Yes
With copper rail	Yes
Secondary connection	Plug-in connection

ETIM - Technical features

Model	Other
Number of primary inputs	1

Logistics

GTIN/EAN	3596032776732
Customs number	8504409590
Price unit	PC
Weight of the packing unit	0.04
Length of the packing unit	0.05
Width of the packing unit	0.045
Depth of the packing unit	0.015

Norms

Conformity to standards	IEC UL
-------------------------	------------

Technical Characteristics

Model	TE
Opening	Diam.8,6
Rated current	5
Secondary rated current	5