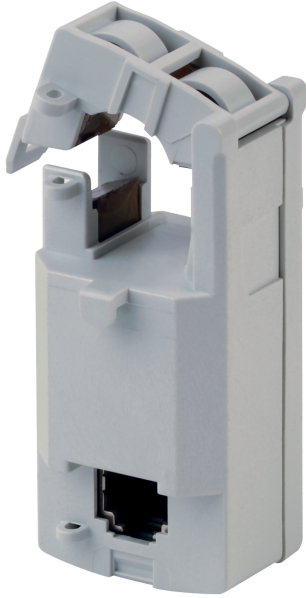


48290656

Sensor iTR-14 14mm 40-160A



Strong points

- Smart sensors
- Accurate
- VirtualMonitor technology
- AutoCorrect technology

General characteristics

- Range from 25 to 600A.
- Used with power monitoring device DIRIS Digiware, DIRIS A-40, DIRIS B.
- PreciSense technology: global protection class in accordance with standard IEC 61557-12.
- Easy installation and configuration.

Compliance with standards

- IEC 61557-12
- ISO 14025
- UL

Access to resources (ex: manuals)

<https://www.socomec.co.in/en-in/reference/48290656>

The split-core current sensors in the iTR ranges enable the current of an electrical installation to be measured. Used with power monitoring device DIRIS Digiware, DIRIS A-40, DIRIS B, they make it possible to perform measurements between 25 and 600 A, with guaranteed accuracy. The RJ12 connection provides quick connections, and the integrated intelligence prevents any configuration errors. The sensors in the iTR range revolutionise the world of measurement and provide access to Virtual Monitor status monitoring technologies and to AutoCorrect automatic configuration.

Classification	
UNSPSC	83101808
ETIM Class	EC002048
IGCC	6042
Commerce	
Effective date	2018-01-01
Country of origin	FR
ETIM - Electrical characteristics	
Rated primary current [A]	160
Rated secondary current [A]	0.1
Rated secondary apparent power [VA]	0.1
Accuracy class	0.2S
Overcurrent limiting factor	FS 10
Calibrated	Yes
ETIM - Mechanical characteristics	
With contact protection	Yes
Height opening [mm]	14..14
Width opening [mm]	14..14
Opening diameter [mm]	14
Snap mounting	Yes
With copper rail	Yes
Secondary connection	Plug-in connection
ETIM - Technical features	
Model	Attachable current transformer
Number of primary inputs	1
Logistics	
GTIN/EAN	3596033020087
Customs number	8504312990
Price unit	PC
Weight of the packing unit	0.082
Length of the packing unit	0.03
Width of the packing unit	0.13
Depth of the packing unit	0.13
Norms	
Conformity to standards	IEC UL
Technical Characteristics	
Model	iTR
Opening	14
Rated current	160
Secondary rated current	RJ12