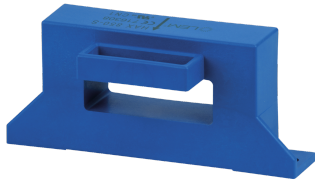


48290708

DC current sensors 1000A solid-core



DC current sensors measure the DC load currents of an electrical installation and transmit information to the Idc measurement modules via an RJ12 connection on the side of the module and Molex on the side of the sensor.

The range comprises solid-core sensors ranging from 50 to 5000 A in various sizes allowing them to be used in new or existing electrical installations.

Up to 3 distinct DC sensors can be connected to the same DIRIS Digiware Idc module.

Strong points

- Plug & Play
- Flexible
- Installation

General characteristics

- 50 to 5000 A.
- Used with DIRIS Digiware DC.

Compliance with standards

- IEC 61010-1

Access to resources (ex: manuals)

<https://www.socomec.co.in/en-in/reference/48290708>

Classification

UNSPSC	83101808
ETIM Class	EC002048
IGCC	6042

Commerce

Effective date	2018-02-01
Country of origin	CN

ETIM - Electrical characteristics

Rated primary current [A]	1000
Rated secondary current [A]	0.1
Rated secondary apparent power [VA]	0.1
Accuracy class	0.5
Overcurrent limiting factor	FS 10
Calibrated	Yes

ETIM - Mechanical characteristics

With contact protection	Yes
Height opening [mm]	21..21
Width opening [mm]	64..64
Snap mounting	Yes
With copper rail	Yes
Secondary connection	Plug-in connection

ETIM - Technical features

Model	Through-feed current converter
Number of primary inputs	1

Logistics

GTIN/EAN	3596033011658
Customs number	9030337000
Price unit	PC
Weight of the packing unit	0.56
Length of the packing unit	0.18
Width of the packing unit	0.145
Depth of the packing unit	0.1

Norms

Conformity to standards	IEC UL
-------------------------	------------

Technical Characteristics

Model	DC
Opening	21x64
Rated current	1000
Secondary rated current	Molex