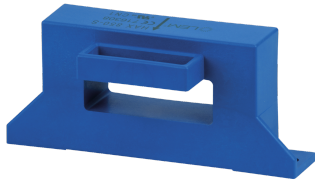


48290710

DC current sensors 2000A solid-core



DC current sensors measure the DC load currents of an electrical installation and transmit information to the Idc measurement modules via an RJ12 connection on the side of the module and Molex on the side of the sensor.

The range comprises solid-core sensors ranging from 50 to 5000 A in various sizes allowing them to be used in new or existing electrical installations.

Up to 3 distinct DC sensors can be connected to the same DIRIS Digiware Idc module.

Strong points

- Plug & Play
- Flexible
- Installation

General characteristics

- 50 to 5000 A.
- Used with DIRIS Digiware DC.

Compliance with standards

- IEC 61010-1

Access to resources (ex: manuals)

<https://www.socomec.co.in/en-in/reference/48290710>

Classification

| | |
|------------|----------|
| UNSPSC | 83101808 |
| ETIM Class | EC002048 |
| IGCC | 6042 |

Commerce

| | |
|-------------------|------------|
| Effective date | 2018-02-01 |
| Country of origin | CN |

ETIM - Electrical characteristics

| | |
|-------------------------------------|-------|
| Rated primary current [A] | 2000 |
| Rated secondary current [A] | 0.1 |
| Rated secondary apparent power [VA] | 0.1 |
| Accuracy class | 0.5 |
| Overcurrent limiting factor | FS 10 |
| Calibrated | Yes |

ETIM - Mechanical characteristics

| | |
|-------------------------|--------------------|
| With contact protection | Yes |
| Height opening [mm] | 21..21 |
| Width opening [mm] | 64..64 |
| Snap mounting | Yes |
| With copper rail | Yes |
| Secondary connection | Plug-in connection |

ETIM - Technical features

| | |
|--------------------------|--------------------------------|
| Model | Through-feed current converter |
| Number of primary inputs | 1 |

Logistics

| | |
|----------------------------|---------------|
| GTIN/EAN | 3596033011672 |
| Customs number | 9030337000 |
| Price unit | PC |
| Weight of the packing unit | 0.56 |
| Length of the packing unit | 0.18 |
| Width of the packing unit | 0.145 |
| Depth of the packing unit | 0.105 |

Norms

| | |
|-------------------------|------------|
| Conformity to standards | IEC UL |
|-------------------------|------------|

Technical Characteristics

| | |
|-------------------------|-------|
| Model | DC |
| Opening | 21x64 |
| Rated current | 2000 |
| Secondary rated current | Molex |