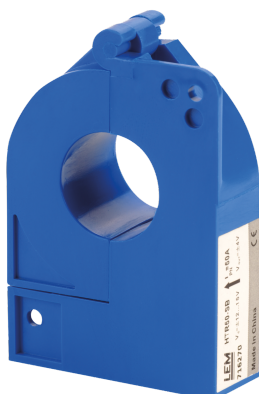


48290755

## DC current sensors 500A split-core



### Strong points

- Plug & Play
- Flexible
- Installation

### General characteristics

- 50 to 2000 A.
- Used with DIRIS Digiware DC.

### Compliance with standards

- IEC 61010-1

### Access to resources (ex: manuals)

<https://www.socomec.co.in/en-in/reference/48290755>

DC current sensors measure the DC load currents of an electrical installation and transmit information to the Idc measurement modules via an RJ12 connection on the side of the module and Molex on the side of the sensor.

The range comprises split-core sensors ranging from 50 to 2000 A in various sizes allowing them to be used in new or existing electrical installations.

Up to 3 distinct DC sensors can be connected to the same DIRIS Digiware Idc module.

### Classification

UNSPSC	83101808
ETIM Class	EC002048
IGCC	6042

### Commerce

Effective date	2018-02-01
Country of origin	CN

### ETIM - Electrical characteristics

Rated primary current [A]	500
Rated secondary current [A]	0.1
Rated secondary apparent power [VA]	0.1
Accuracy class	0.5
Overcurrent limiting factor	FS 10
Calibrated	Yes

### ETIM - Mechanical characteristics

With contact protection	Yes
Opening diameter [mm]	21
Snap mounting	Yes
With copper rail	Yes
Secondary connection	Plug-in connection

### ETIM - Technical features

Model	Attachable current transformer
Number of primary inputs	1

### Logistics

GTIN/EAN	3596033011757
Customs number	9030337000
Price unit	PC
Weight of the packing unit	0.1
Length of the packing unit	0.1
Width of the packing unit	0.055
Depth of the packing unit	0.04

### Norms

Conformity to standards	IEC UL
-------------------------	------------

### Technical Characteristics

Model	DC
Opening	Diam.21
Rated current	500
Secondary rated current	Molex